

# WGSS ENTRANCES/EXITS

STUDENTS WILL ENTER AND EXIT AT THE SAME LOCATION ACCORDING TO THIS MAP

## Access Point A

- All PHE classes including the weight room
- Rooms 125 and 127

- Students access rooms 131-139 (shops) through individual exterior rear doors

## Access Point F

- Rooms 170-176 (Math)
- Room 154 (Socials)
- Room 155 (Science)
- Rooms 181 and 182
- (English, Math, Socials)

- Students access rooms 106, 108, and 110 through individual front doors
- Cafeteria, Ceramics, Drama, Photography/Art

## Access Point E

- Room 164 (Art)
- Room 163-167 (English)
- Rooms 240-249 (ELL, English, Socials)

## Access Point B

- Rooms 113/111 (Band/Choir)
- Rooms 201, 204, 206, 208 (computers)
- Rooms 221 and 223
- Rooms 225 and 227 (Foods)
- Room 226 (Textiles)

## Access Point C

- Rooms 141-153 (Science)
- Rooms 229 and 123
- X-Block entrance (classes starting prior to 9:05am)

## Access Point D-Exterior Stairwell

- Room 252-265 (Languages and Learning Support)



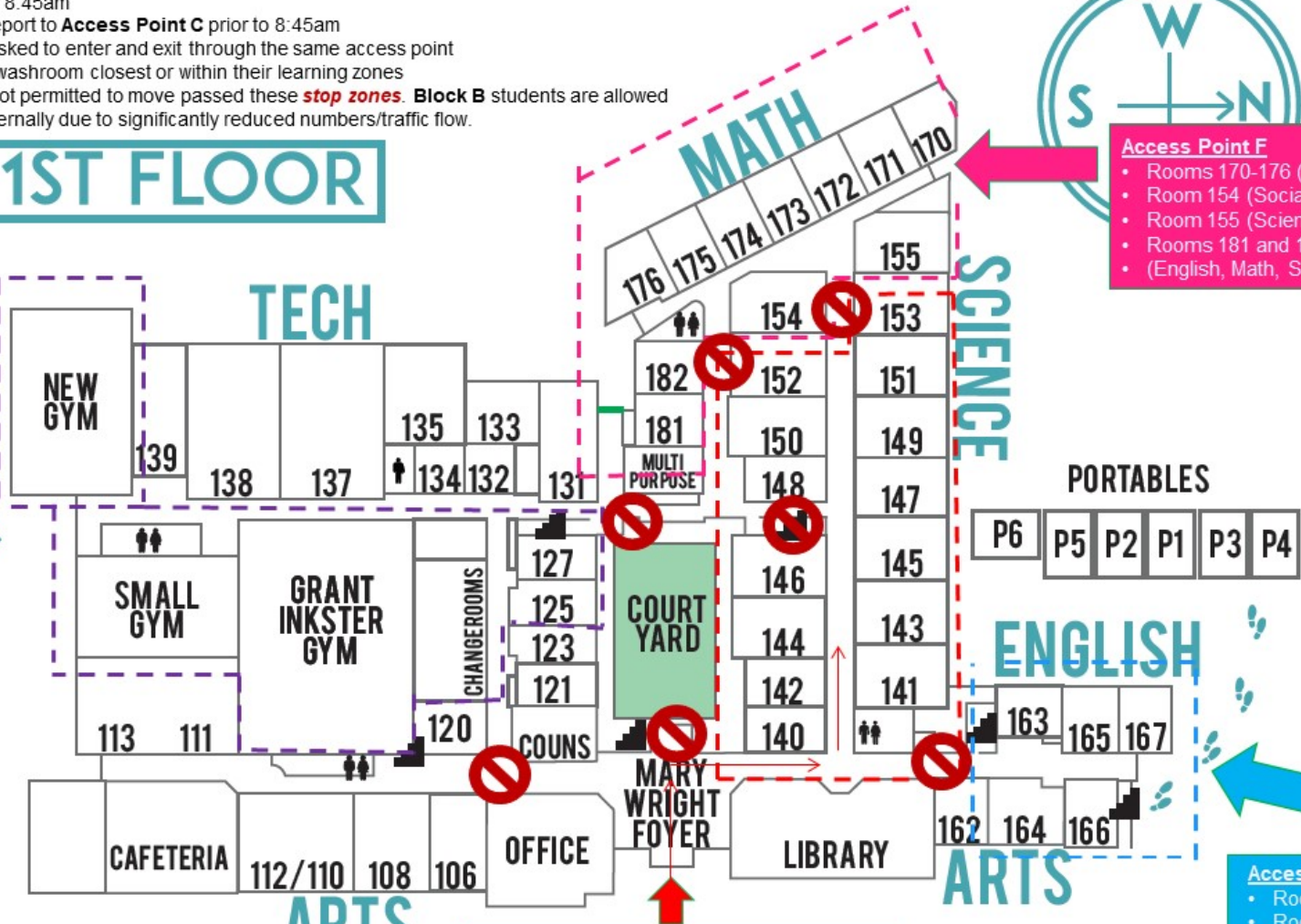
- ❖ Entrance doors open at 8:45am
- ❖ X-Block students can report to **Access Point C** prior to 8:45am
- ❖ **Block A** students are asked to enter and exit through the same access point
- ❖ Students must use the washroom closest or within their learning zones
- ❖ **Block A** students are not permitted to move passed these **stop zones**. **Block B** students are allowed to move more freely internally due to significantly reduced numbers/traffic flow.



# 1ST FLOOR

**Access Point A**

- All PHE classes including the weight room
- Rooms 125 and 127



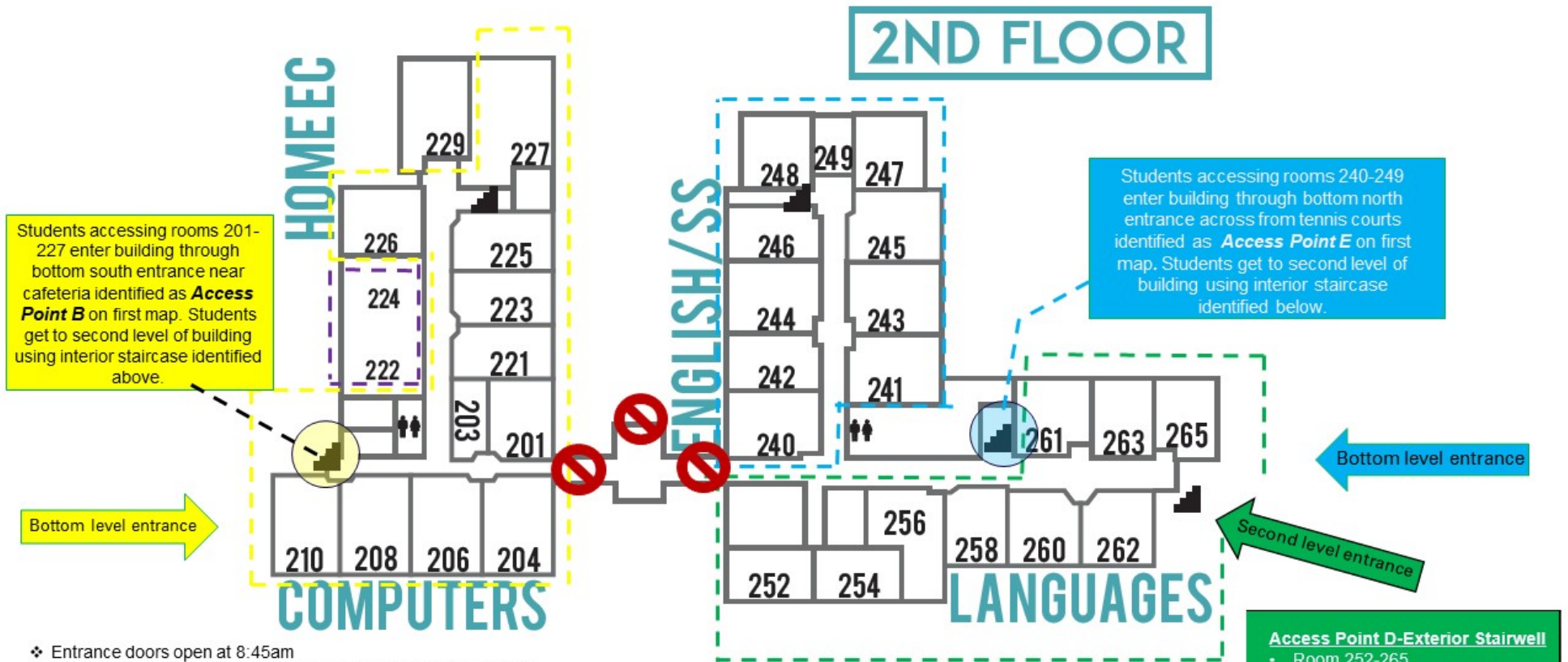
**Access Point F**

- Rooms 170-176 (Math)
- Room 154 (Socials)
- Room 155 (Science)
- Rooms 181 and 182 (English, Math, Socials)

**Access Point C** -Rooms 141-153 (Science)

**Access Point E**

- Room 164 (Art)
- Room 163-167 (English)



- ❖ Entrance doors open at 8:45am
- ❖ X-Block students can report to **Access Point C** prior to 8:45am
- ❖ **Block A** students are asked to enter and exit through the same access point
- ❖ Students must use the washroom closest or within their learning zones
- ⊘ **Block A** students are not permitted to move passed these **stop zones**. **Block B** students are allowed to move more freely internally due to significantly reduced numbers/traffic flow.